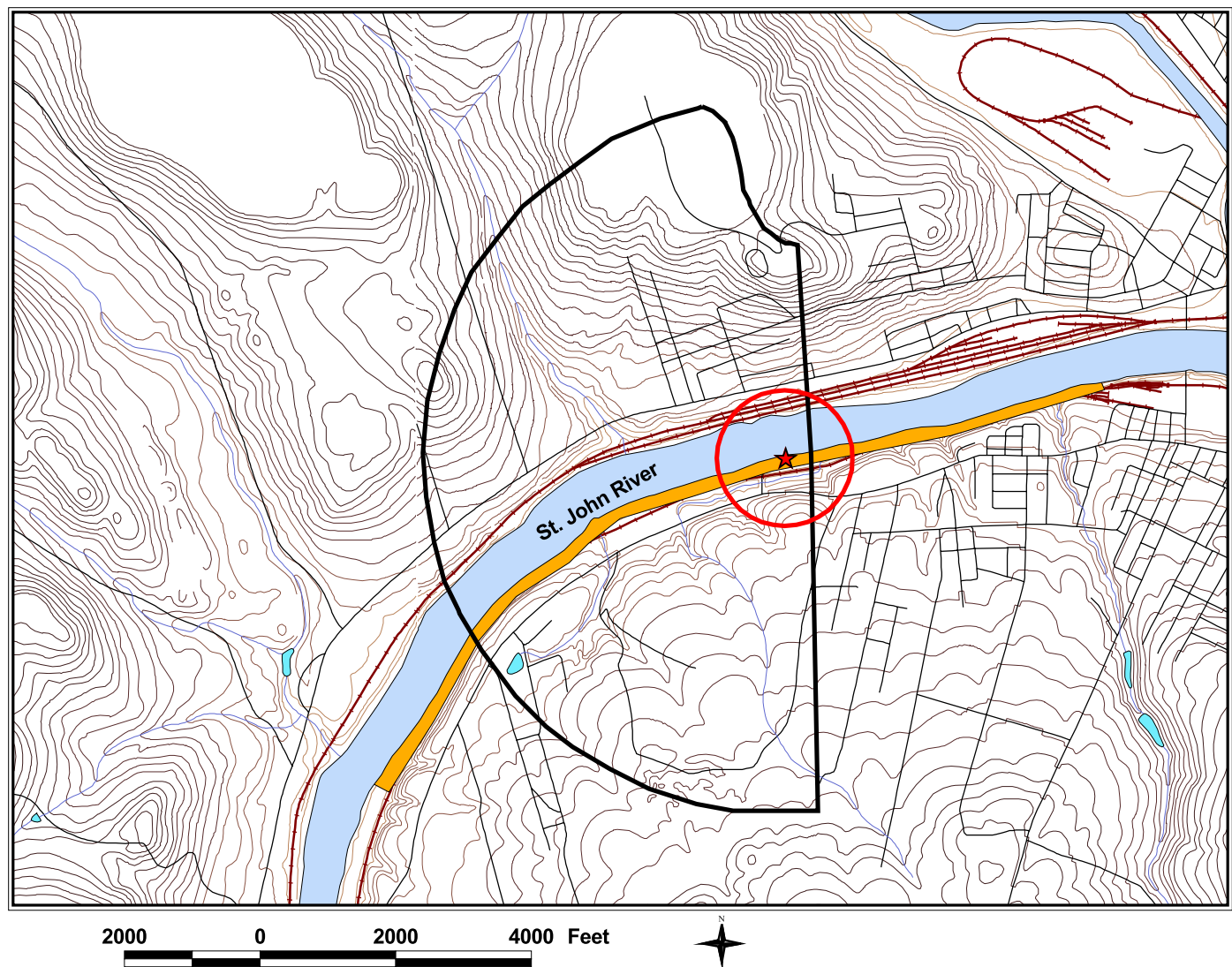




Madawaska Public Water Supply Elevation Contours & Potential Erodible Soils



Legend

- | | | | |
|---|---|--------------------|--------------------------|
| ★ | Madawaska Water District Intake | ○ | Potential Erodible Soils |
| ○ | 1000 ft. Intake Buffer | Elevation Contours | |
| ○ | St. John River | ○ | 280 - 400 |
| ○ | Ponds | ○ | 401 - 500 |
| ○ | St. John River Local Watershed Boundary | ○ | 501 - 620 |
| ○ | Streams | ○ | 621 - 770 |
| ○ | Railroad Line | ○ | 771 - 950 |
| ○ | Public Roads | | |

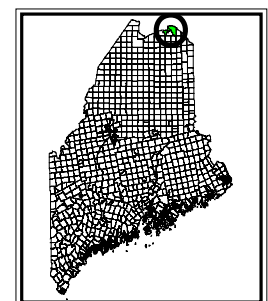


Figure 4

Scale 1:30,000

1 inch = 2,500 feet

3/3/03

- 1) Base data layers are from the Maine Office of GIS.
- 2) Watershed boundary, intake and buffer locations are from the Maine Drinking Water Program.
- 3) Potential erodible soils identified through the Maine Source Water Assessment Program (SWAP).
- 4) Data are for planning purposes only.